



phy | t r a c e®
Tracing of Contaminants

PhytoLab – Our Services

PhytoLab is an independent, ISO 17025-accredited and GMP-certified consultancy laboratory for herbal medicinal products, food, animal feed, and cosmetics. Our services include the analysis, development, quality control, and regulatory approval of herbal products at all stages of processing. PhytoLab is your competent partner in the field of analysis of residues and contaminants in plants, herbal products (essential oils, tinctures, extracts), pharmaceutical raw materials, and finished herbal medicinal products. Personal and competent advice tailored to your needs form a trusting partnership. Professional sample preparation, valid and reliable analysis, and document management are our trademarks. As a company in the nature network, we are committed to the highest standards of quality, efficacy and safety of herbal products with our experienced team and state-of-the-art equipment.

Mycotoxins - scope of analysis

The **testing and monitoring of contaminants** is an integral part of the production chain of food, animal feed, and herbal medicinal products (including homeopathic and anthroposophic preparations). The term **mycotoxins** covers numerous substances with different structures that can be formed by moulds under unfavorable conditions in the field or during further processing, storage, and transport and then ultimately end up as **undesired contaminants in food, animal feed and herbal medicinal products**. Even small amounts can cause acute poisoning or chronic health effects in humans and animals. **PhytoLab analyzes mycotoxins in our state-of-the-art laboratory** using HPLC coupled with fluorescence detection and MS/MS. Based on our many years of experience, we **analyze your products and evaluate the results reliably and competently**.

PhytoLab is **your partner** for conducting analysis of contamination by mycotoxins with modern multi-, group or individual methods. With over **30 years of experience** in the phytopharmaceutical, food, animal feed, and cosmetic sectors, we assist you in establishing **risk-based test plans** for your products. Our experts recommend product-specific testing scopes, taking into account geographical origin and plant parts used.

If you are looking for a **competent, fair, and independent partner**, and expect **reliable analytical results** carried out by motivated staff on state-of-the-art laboratory instrumentation, then you should choose PhytoLab. We offer you the best possible support for your risk management. **Everything for successful pesticide and contaminants analysis - today and in the future!**

Mycotoxins by HPLC-Fluorescence analysis

Aflatoxins B1, B2, G1, G2
Aflatoxins B1, B2, G1, G2 in baby food or enzyme preparations with low LOQ
Aflatoxin M1
Ochratoxin A

Mycotoxins by HPLC-MS/MS analysis

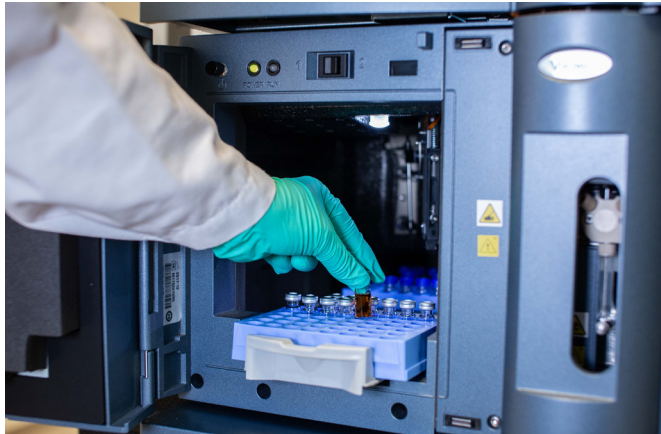
Aflatoxins B1, B2, G1, G2
Ochratoxin A
Patulin

Alternaria toxins

Altenuene
Alternariol
Alternariol monomethyl ether
Tentoxin
Tenuazonic acid

Fusarium toxins

Deoxynivalenol
Fumonisin B1
Fumonisin B2
HT-2 toxin
Nivalenol
T-2 toxin
Zearalenone



Regulatory requirements

Due to their toxicity, mycotoxins are subject to strict legal regulations. Maximum levels in foodstuffs have been stipulated in the **European Union** in Commission Regulation (EU) 2023/915. This regulation sets maximum levels for aflatoxins, ochratoxin A, patulin, deoxynivalenol, zearalenone, and fumonisins in various food matrices. Furthermore, the **testing of alternaria toxins** is becoming increasingly important, as the EU Commission recommends the monitoring of Alternaria toxins in foodstuffs with Commission Recommendation (EU) 2022/553 which also indicates action levels above which root cause analysis should be performed. The **European Pharmacopoeia** sets a maximum limit for aflatoxin B1 in herbal drugs in chapter 2.8.18. The **United States Pharmacopeia** (Chapter 561) states maximum limits for aflatoxin B1 and the sum of aflatoxins B1, B2, G1, and G2 and requires consideration of the unexpected contamination with aflatoxins in determining compliance.

Legal requirements and **consumer expectations** demand maximum reliability and experience in the analysis of residues and contaminants in herbal products. As an established partner of the pharmaceutical industry and with our expertise in the field of regulatory approval relevant analysis, the associated method validation and documentation, we provide **GMP-compliant** analysis data to our customers.

Industry sectors and analysed products

For **over 30 years**, PhytoLab has been a reliable and renowned **partner for companies in the pharmaceutical, food, feed, and cosmetics industries**, helping to create and secure the success of many. The diversity and complexity of dried herbal matrices **demand particular expertise, care, and experience**. As part of the nature network, we offer a unique wealth of experience and expert support in assessing findings. From professional sample preparation to analysis results, we stand by your side with a trusting partnership and offer competent, personalized, and sustainable advice in analyzing raw materials and finished products. **Our experience ensures your security!**

Animal feed

Animal feed

Pet food

Cosmetics

Essential oils, flavors, fragrances

Herbal extracts

Foodstuffs

Additives, excipients

Baby food

Cereal products, baking agents, cereals

Coffee

Dried fruit

Extracts for food and beverages

Fats and fatty oils

Flavors, essential oils

Food supplements

Herbal and fruit teas

Herbs and spices

Oleoresins

Tea

Herbal medicinal products

Homeopathic remedies

Medicinal tea

Narcotic drugs

Pharmaceutical extracts

Phytopharmaceuticals

Quality and accreditations

The quality of our work is confirmed by **accreditation** in accordance with **DIN EN ISO/IEC 17025** and **GMP certification**. Regular participation in interlaboratory comparisons or proficiency tests from various recognized providers is also an essential part of our quality assurance. Our commitment is also reflected in our collaborations and our involvement in various industry associations and numerous committees, where we regularly exchange views on complex legal issues.

Do you require **holistic consultation** on your products and raw materials for your **risk management**? Are the above-mentioned products, pesticides, or other contaminants your topic and would you like **a personal exchange**?

Please contact us directly!

✉ welcome@phytolab.de

🌐 www.phytolab.com

